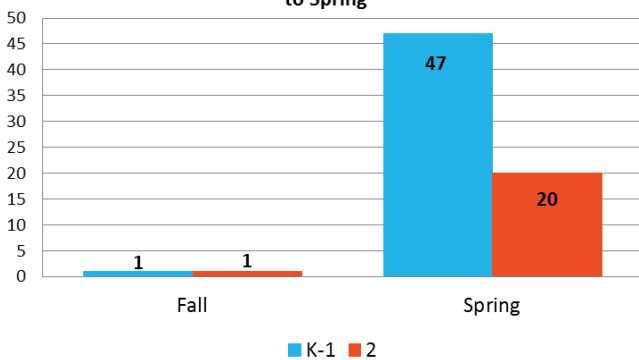


Transformative Reading Instruction (TRI) is Working for Students in Milwaukee!

This page summarizes the four main findings of a UWM evaluation of TRI.

1 TRI students in grades K-2 performed significantly better on the STAR than similar students who did not have TRI instruction.

Percent of TRI Students that were "on target" from Fall to Spring



In the fall, 1% of students placed in TRI were on target. By the spring, 47% of TRI students in K-1st grade classes, and 20% of TRI students in 2nd grade classes, were on target.*

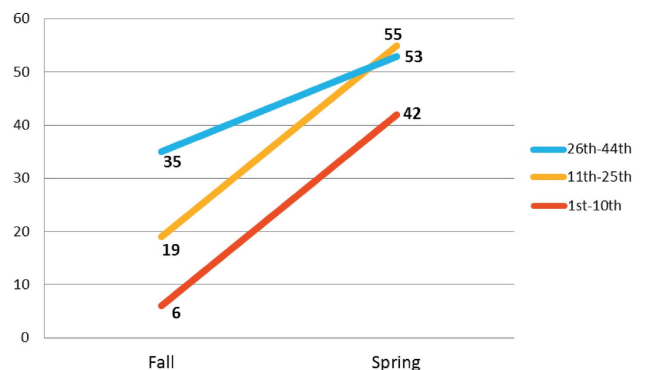
*According to the "on target" scores in place in Milwaukee Public Schools at the time of the evaluation.

2

3 As a group, the average fall score for TRI students between the 1st and 10th percentile was at the 6th percentile; for the same group of students, their average score in the spring grew to the 42nd percentile.

(Same logic applies to other two percentile groups)

Percentile Growth of TRI Students from Fall to Spring



TRI students who received the intended number of sessions performed better on STAR than TRI students who received fewer than the intended number of sessions.

4

Congratulations to everyone who continues to play a crucial role in the success of this reading foundations model!

